

CEREMONY REPORT
FOR PLAQUING
THE
PROSPECT DAM
COMPLEX

17th April 1994



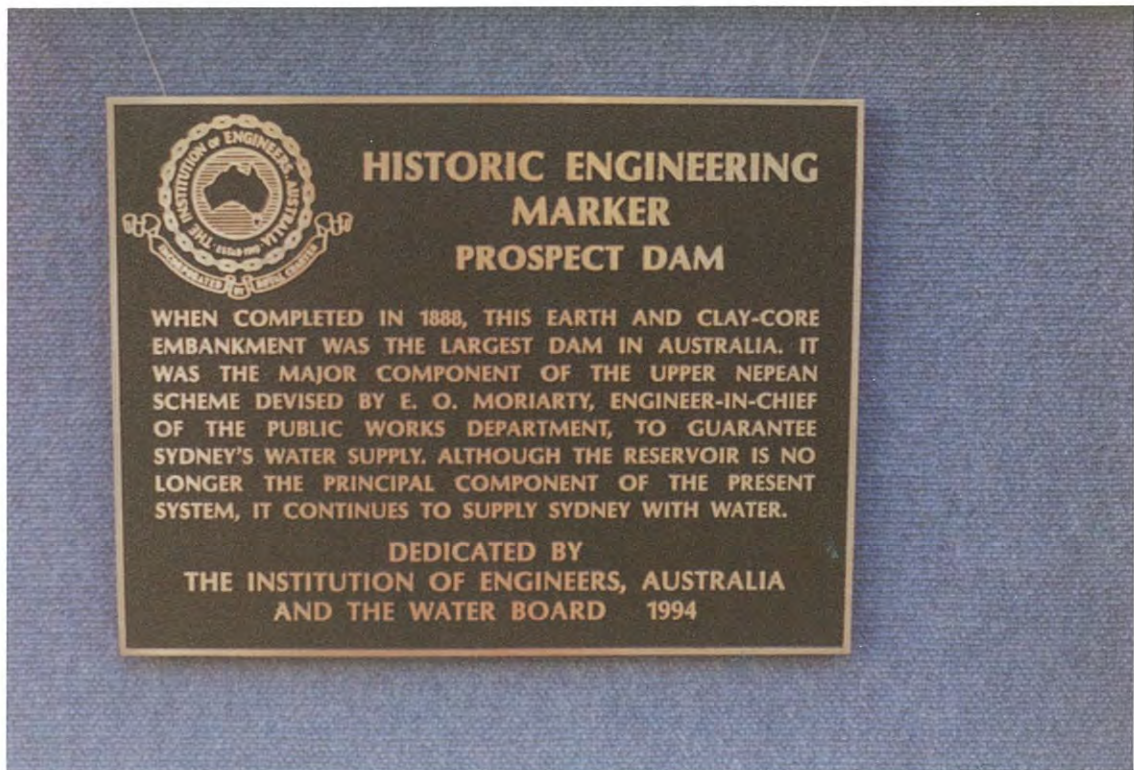
Alex Baitch, Vice-President I E Aust, and Jeff Cameron, Member
of the Water Board unveiling the plaques at Prospect Dam.



Attendance at the Prospect Dam ceremony.



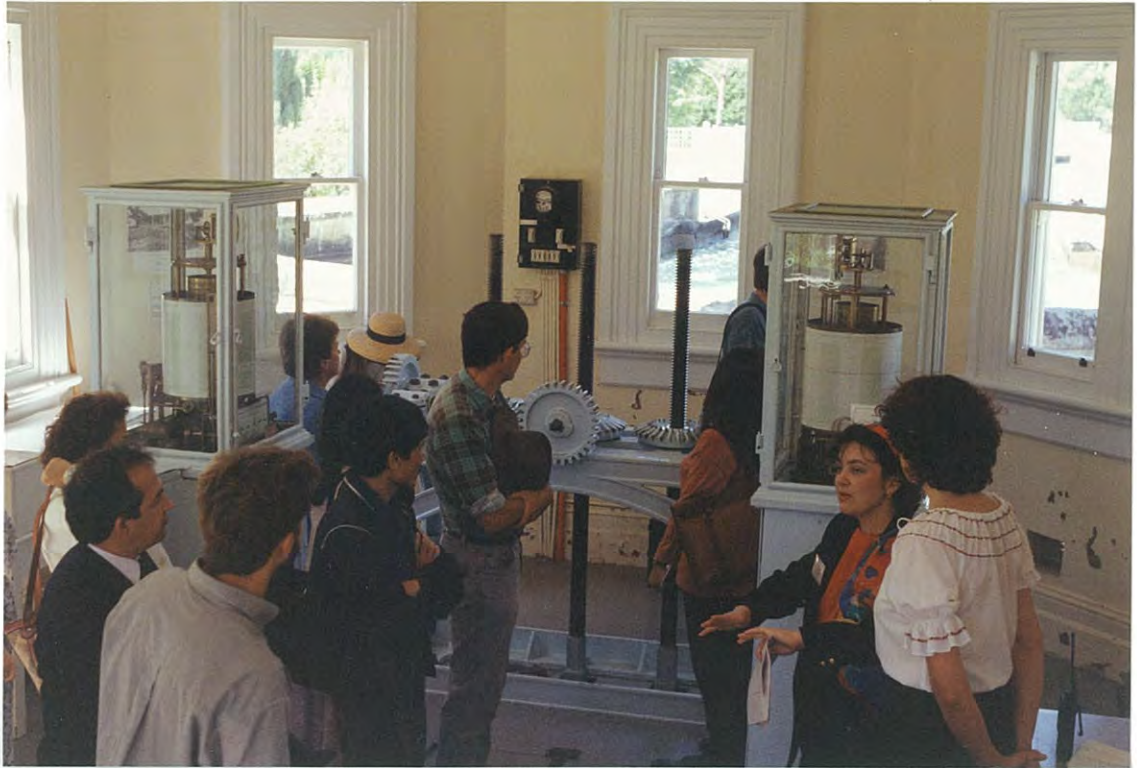
Alex Baitch (left) I E Aust and Jeff Cameron (right) Water Board.



The plaques.

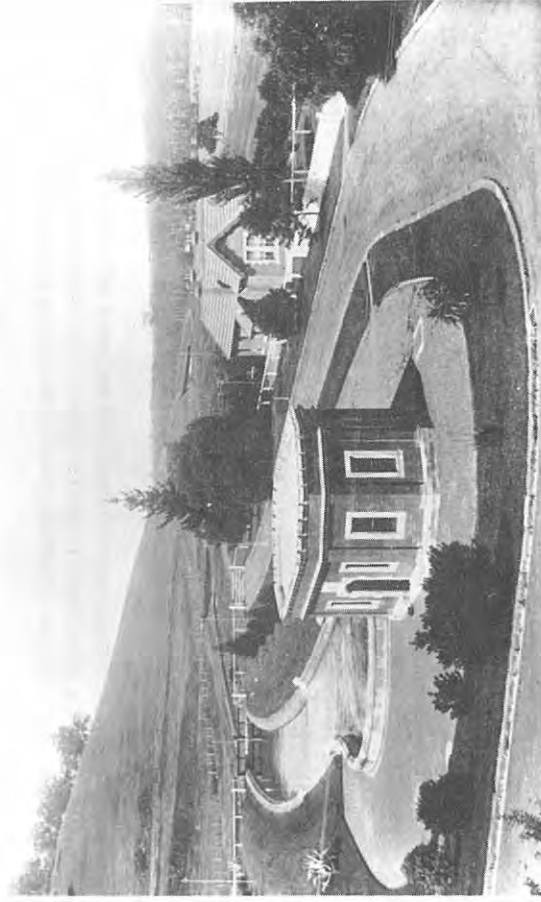


Attendess on a tour of the Prospect Complex
conducted by Water Board staff.



Attendess on a tour of the Prospect Complex
conducted by Water Board staff.

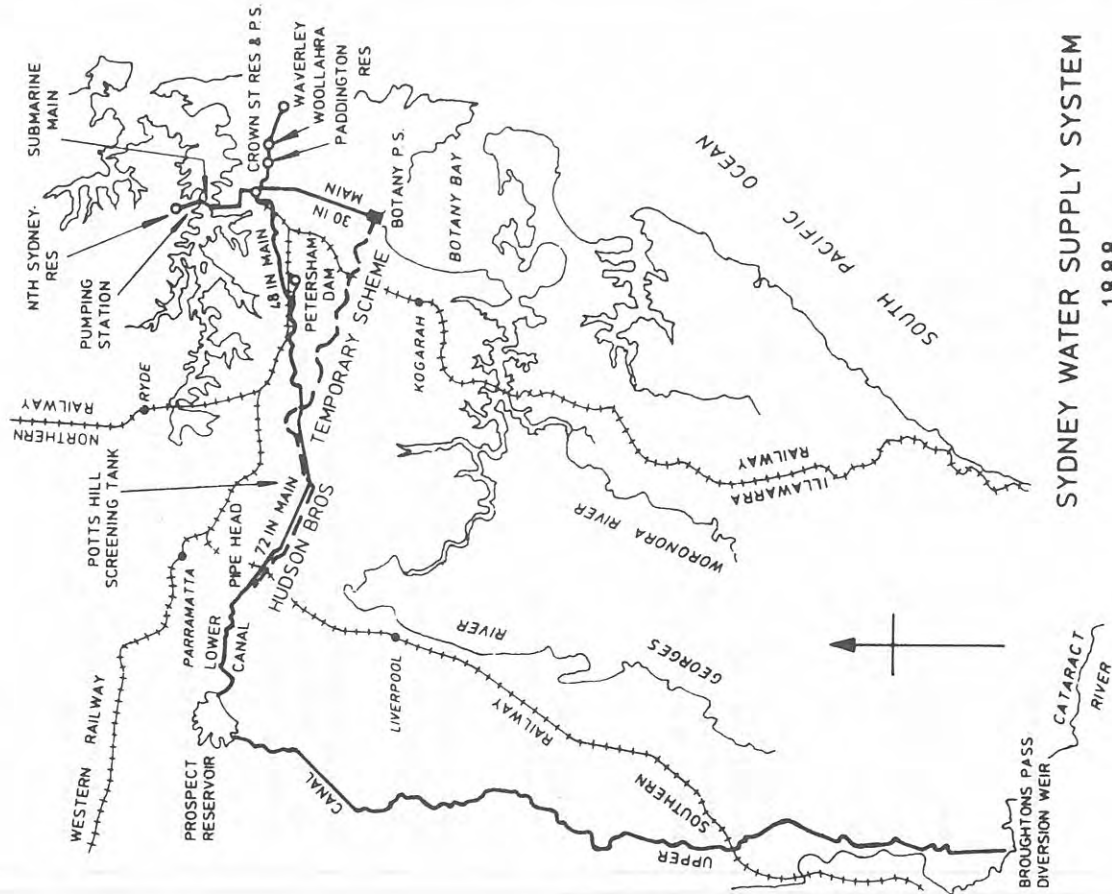
The Prospect Reservoir System



Over 100 years of Service



WATER BOARD
SYDNEY - ILLAWARRA - BLUE MOUNTAINS



SYDNEY WATER SUPPLY SYSTEM
1888

INTRODUCTION

This structure is a remarkable engineering feat within a remarkable scheme. Before this scheme, Sydney was an Eastern Suburbs Town with an Eastern Suburbs Water Supply. The shape of Sydney changed when shortages forced the "quantum leap" of going out into the bush for 100 km. As a result, areas such as Campbelltown, Bankstown and Burwood received a water supply years before they otherwise would have.

Prospect Reservoir represents the damming of part of the Georges River Catchment. Nepean River water could be stored here and flow along the Lower (Outlet) Canal through the Parramatta River Catchment to Pipehead and then to Centenarian Potts Hill Reservoir, within the Cooks River Catchment. Warragamba Water now provides the major source for Prospect Reservoir supply and it can be further boosted with Shoalhaven Water, via Warragamba Dam or Nepean Dam and the Upper (Inlet) Canal.

At the time of construction it was the largest dam in the state. Cataract Dam was not completed until 1907 and Burrinjuck not until 1912.

The Lower Canal, originally the sole supply out of Prospect Reservoir, will soon be replaced and upsized by a 3.6m diameter tunnel which is currently being built. It appears to be much more modern than the Upper Canal but that is because it was substantially upsized in 1913.

A decision was made to site Prospect Reservoir here rather than build it half size and at a greater elevation 3 km to the south at Bulls Hill. Had it been there, there would have been greater water pressure for Sydney in the early stages, however it would not have been possible to gravitate Warragamba Water through to Prospect Reservoir. In the 1902 drought the reservoir was about to run dry. Therefore a scheme was built to pump water from the Nepean River to the Upper Canal at Menangle. Had that scheme also run dry pipes had already been purchased by the Board to pump water from the Nepean River at Penrith straight through to Prospect Reservoir.

With the current debate about planning for Sydney's future, this structure and scheme have had more effect on the shape of Sydney, than any factor.

The development of the Upper Nepean Water Supply Scheme proved to be one of the major engineering feats of its time. It comprised the transport of water from the Upper Nepean Catchments, ie Cataract, Cordeaux, Avon and Nepean Rivers to Prospect Reservoir by the Upper (Inlet) Canal a distance of approximately 60 kms by gravity. The dams were not built for a further 20 years. From Prospect Reservoir it was conveyed by another open canal - the Lower (Outlet) Canal - for a distance of 8 kms to Pipehead Guildford where it was distributed by a pipeline to the city.

Following the completion of current works which includes the construction of Prospect Water Treatment Plant and a tunnel between Prospect Reservoir and Pipehead, the Lower Canal and Prospect Valve houses will finally cease to function as part of our water supply after more than 100 years of service. Prospect Reservoir will continue to provide a back up source during dry weather. The aim of today's ceremony is to recognise the contribution of these 3 key engineering components by way of commemorative plaques.

PROSPECT RESERVOIR

Prospect Reservoir completed in 1888, supplies most of the water for the Sydney metropolitan area. The dam is an earth and rockfill bank with a puddled clay core, having a storage capacity of 50,000 megalitres, it is one of the largest earthfill dams for water supply in New South Wales.

Following completion, further work was required in 1889 and 1890 to repair slumps in the upstream face. Other remedial work was carried out in 1899-1902 and the 1970s.

PROSPECT RESERVOIR VALVE HOUSES

Prospect Valve Houses provided a control system for regulating discharge of water from the Reservoir to the Lower (Outlet) Canal.

The valve house buildings are unusual octagonal shaped buildings some 10m long by 6m wide constructed primarily of sandstone bricks, with sandstone foundations. The buildings house the complex valve equipment while providing an elegantly proportioned structure of considerable aesthetic appeal.

The valve chambers are lined with crafted brickwork and much of the valve gear is original. Each valve is operated from the floor through a simple arrangement of gears that raise and lower vertical shafts.

One valve house is located some 30m offshore of the Reservoir access being provided by a narrow walkway. The second is near the beginnings of the Lower Canal at what is known as the 'horse shoe'.

THE LOWER (OUTLET) CANAL

The Lower Canal, also completed in 1888, is the third key component of the Prospect Complex and conveys water by gravitation some 8km to Pipehead at Guildford where steel pipes distribute the water and take it through to the large reservoir at Potts Hill near Bankstown. The construction of the canal is an outstanding example of 19th century hydraulic engineering techniques.

The canal was originally lined with masonry. In 1912 however, to cater for the increasing demand for water and the need to strengthen weak sections of the canal, it was realigned by Monier plates, (precast concrete slabs). This work was completed in 1913 and represented the largest continuous concrete work of its kind constructed in Australia up to that time.

It will become redundant in the future when the tunnel to Pipehead is completed in the late 1990s and the Board is examining sympathetic options for its re-use.

THE PLAQUING PROGRAM

The Institution of Engineers, Australia undertakes a national plaquing program to identify historical engineering works and sites in Australia by means of the erection of a bronze plaque. This is the second event in cooperation with the Water Board.



Woodford Academy

miles from Emu Plains to Bathurst" in one hour. This talk, accompanied by many colour slides, attracted over 80 people, many of whom had never attended any Trust functions — a very valuable exercise as new contacts are vital to the Trust's future.

Branch President Geoffrey Mobbs (descended from Mobbs Hill of course) reported that more than 20 applications for membership have been received to date, since Heritage Week and that the outstanding success of Heritage Week was in part due to the fact that families could attend without bending the budget. ■

How You Can Help the Norman Lindsay Gallery

John Duigan's excellent film *Sirens* set in the National Trust owned property, the Norman Lindsay Gallery.

The Gallery urgently needs the following equipment to assist in its education program:

• 1 Camera (Minolta 700si with lenses & Flash)	\$1,800
• 1 Video Camera	\$1,800
• 1 Overhead Projector	\$800
• 5 Walkmans (with external microphones)	\$220 each
• Art supplies	\$500

A donation to cover the purchase of one of these items would be gratefully accepted. Please forward your cheque to The National Trust of Australia (NSW), along with your name and address and the item you wish to donate, to the Development Officer, GPO Box 518, Sydney 2001. Your donation is tax deductible and will be acknowledged in the next *Quarterly*. ■

ENGINEERING HERITAGE — MORE RECOGNITION FOR NATIONAL TRUST CLASSIFICATIONS



Prospect Offtake

Three more of the Trust's Industrial Archaeology Classifications came into prominence in April when heritage plaques awarded by the Institution of Engineers, Australia, were unveiled at Prospect Reservoir. The plaques are to be placed on the Prospect Reservoir embankment, the Lower Canal and inlet valve house to the Lower Canal, classified by the Trust in late 1985 (1986 for the Valve House).

Prospect Reservoir and the Lower Canal are major components of the Upper Nepean Scheme which was commissioned in 1888 and was noteworthy for bringing water to Sydney from the Southern Highlands, ending reliance on local sources such as the Botany Swamps.

The Vice President of the Institution of Engineers, Mr Alex Baitch, represented the Institution and Water Board Director, Mr Jeff Cameron, represented the Board at the award ceremony. The Trust's classifications reports were used by the Institution in assessing heritage significance for the award of the plaques.

John Collocott
Industrial Archaeology Committee



— Antiquariat *Fine Old Rare Books — All Subjects Covered* —

Specialist subjects include: Australiana, cricket, Scotland and the Scots.
Send for a free catalogue stating interests. We also buy books. Visit our shop (closed Sunday).

333 BONG BONG STREET, BOWRAL

Phone (048) 62 2192 Fax (048) 62 2050

AUSTRALIAN AFFORDABLE AIR TOURS

Heron Airlines offers two great air journeys of Australia at an affordable price. (On a Charter Basis.)

THE TOURS • Quality Accommodation

- Professional local guides • All meals
- Limited to 14 passengers

THE AIRCRAFT

- 4 engine de havilland herons • Large panoramic windows • Standup cabin • Toilet onboard
- All window seats

YOUR CREW

- 2 Airline transport pilots
- Tour escort/flight attendant

Contact your local Travel Agent or Heron Airlines

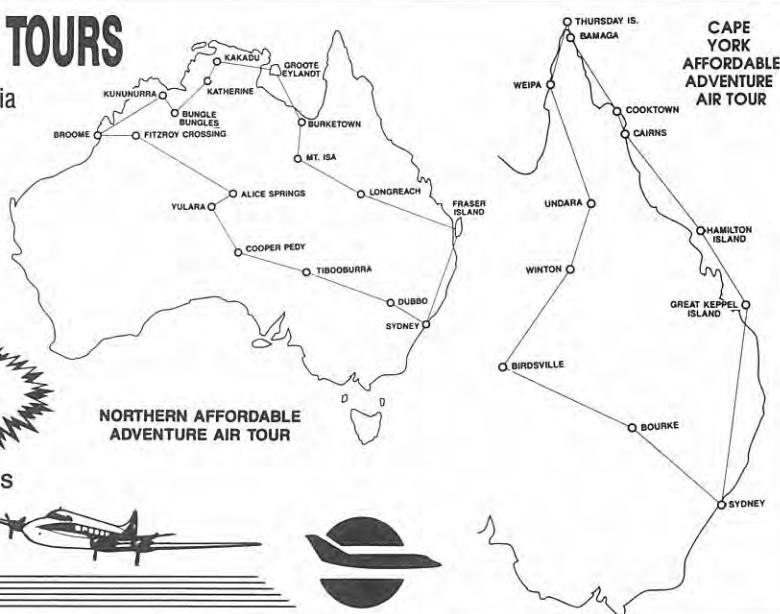
on **008 025 261**

or **(02) 545 2677**

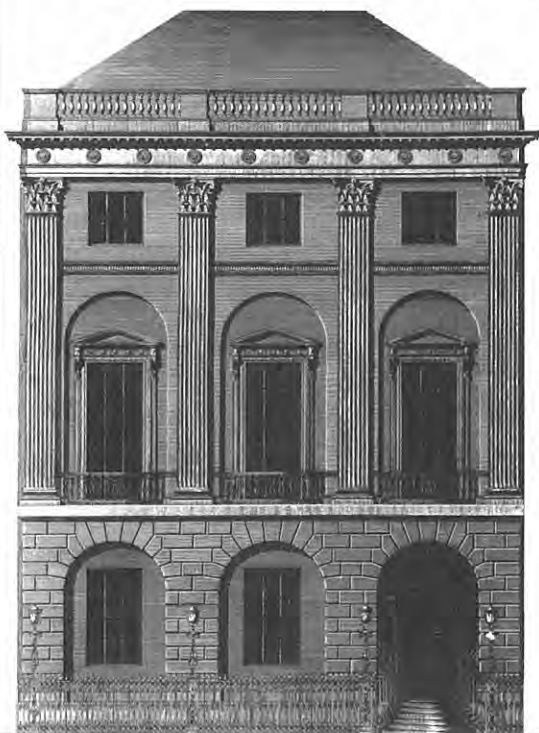
HERON AIRLINES

**FROM
\$3499**

**NORTHERN AFFORDABLE
ADVENTURE AIR TOUR**



A Decorative Heritage



A Decorative Heritage is just one of the courses in the At Home Lecture Series, in which you learn about English, French and Continental architecture, interior decoration and fine antique furniture from 1500–1930.

We examine periods, styles and tastes by looking at the people, events and issues of the time to provide you with an entertaining and interesting study.

To be held at the National Trust Greengate Hotel in Killara from July 29, lecture topics include; The Georgians at Home, Women of Influence – Mistresses & Consorts of the Kings of France, and The Lure of Tuscany and Provence.

To receive an information sheet and a free Period and Style Guide, please phone or fax Carolyn McDowall on (02) 326 1267.

At Home

The Authentic Decor Lecture Series

Authentic Decor Pty Ltd ACN 056 688 681 37 Moncur Street, Woollahra NSW 2025 Australia Phone and Fax (02) 326 1267

Jeff Cameron
WATER BOARD.

4 May 1994

Dear Jeff,

Plaquing at Prospect

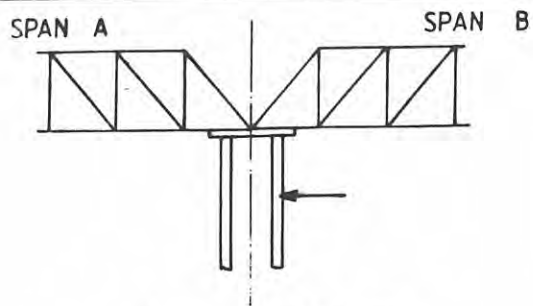
On behalf of the Institution and the Engineering Heritage Committee I extend our sincere thanks for representing the Board so effectively at the plaquing ceremony and other activities at Prospect on Sunday, April 18. It was a pleasure for me to work with Reece McDougall and the other members of the Board's staff in achieving a successful outcome.

It must have been a rewarding feeling for them to have had the good response to the tours from other members of the public from other parts of the picnic areas. The photographs will be a reminder of a pleasant and successful occasion.

We look forward to the same level of cooperation in plaquing other items of the Board's historic works.

Best wishes,

D. J. Fraser
Plaquing coordinator.



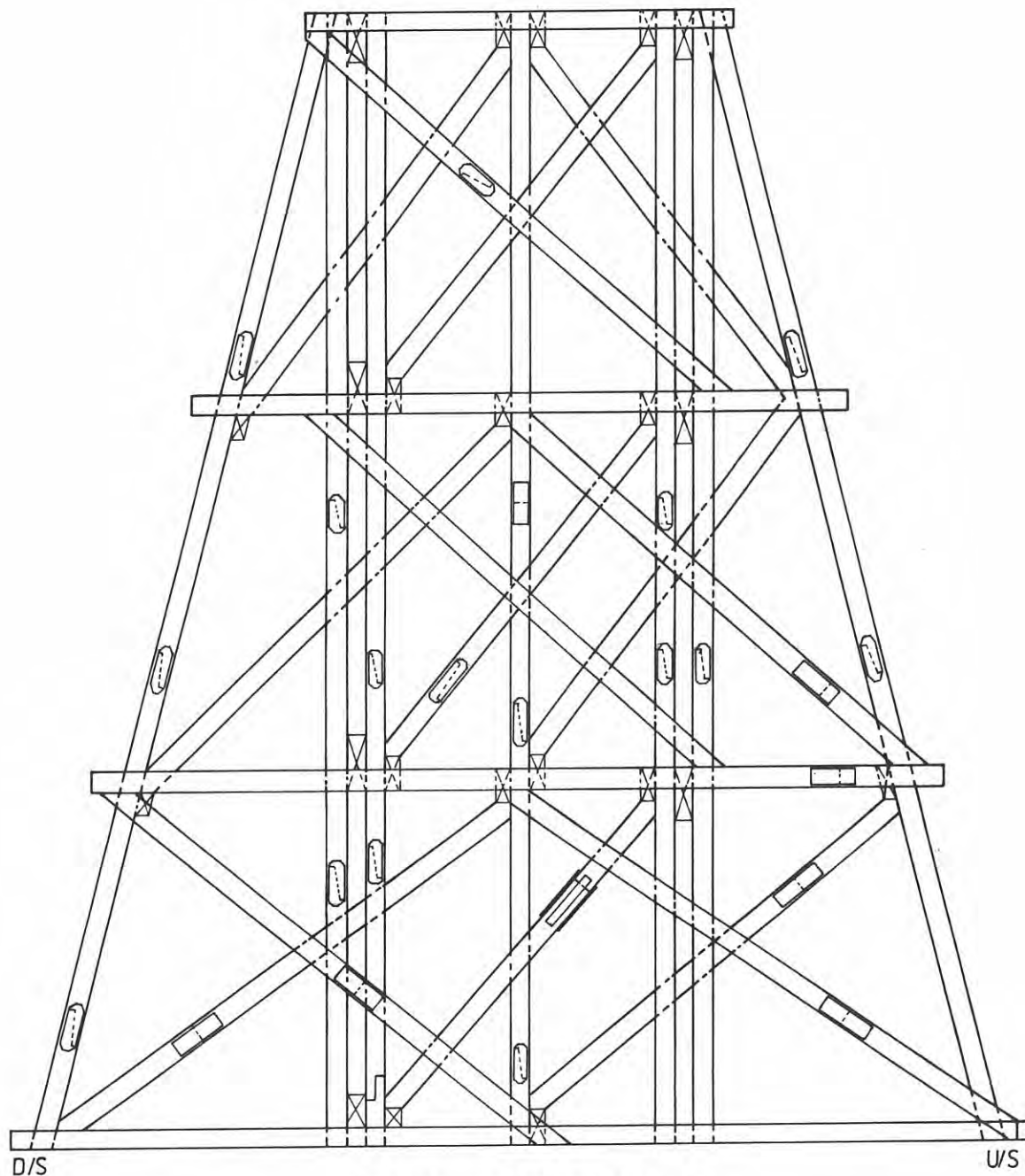
KEY DIAGRAM

LEGEND



SCARF SPLICE

BUTT SPLICE



PIER 1 FACE-SPAN B

Title

SPLICE POSITION
PIER 1

FIGURE 2.12

Project



VICTORIA
BRIDGE
PICTON

Alex Baitch
Vice-President
Institution of Engineers,
Australia.

4 May 1994

Dear Alex,

Plaquing at Prospect

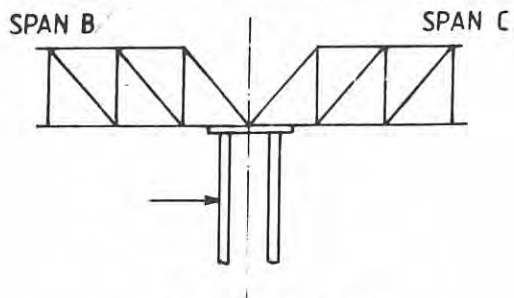
On behalf of the Engineering Heritage Committees, both National and of Sydney Division, I extend our sincere thanks to you for deputising for the President so effectively at the plaquing ceremony and other activities at Prospect on Sunday, April 18. It was a most successful occasion and the photographs will serve as a pleasant reminder.

The Water Board's organiser, Reece McDougall, was very pleased with the all aspects of the formalities and the later response to the tours from other members of the public from other parts of the picnic areas.

We look forward to continuing the cooperation in plaquing other items of the Board's historic works.

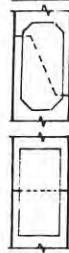
Best wishes,

D. J. Fraser
Plaquing coordinator.



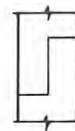
KEY DIAGRAM

LEGEND

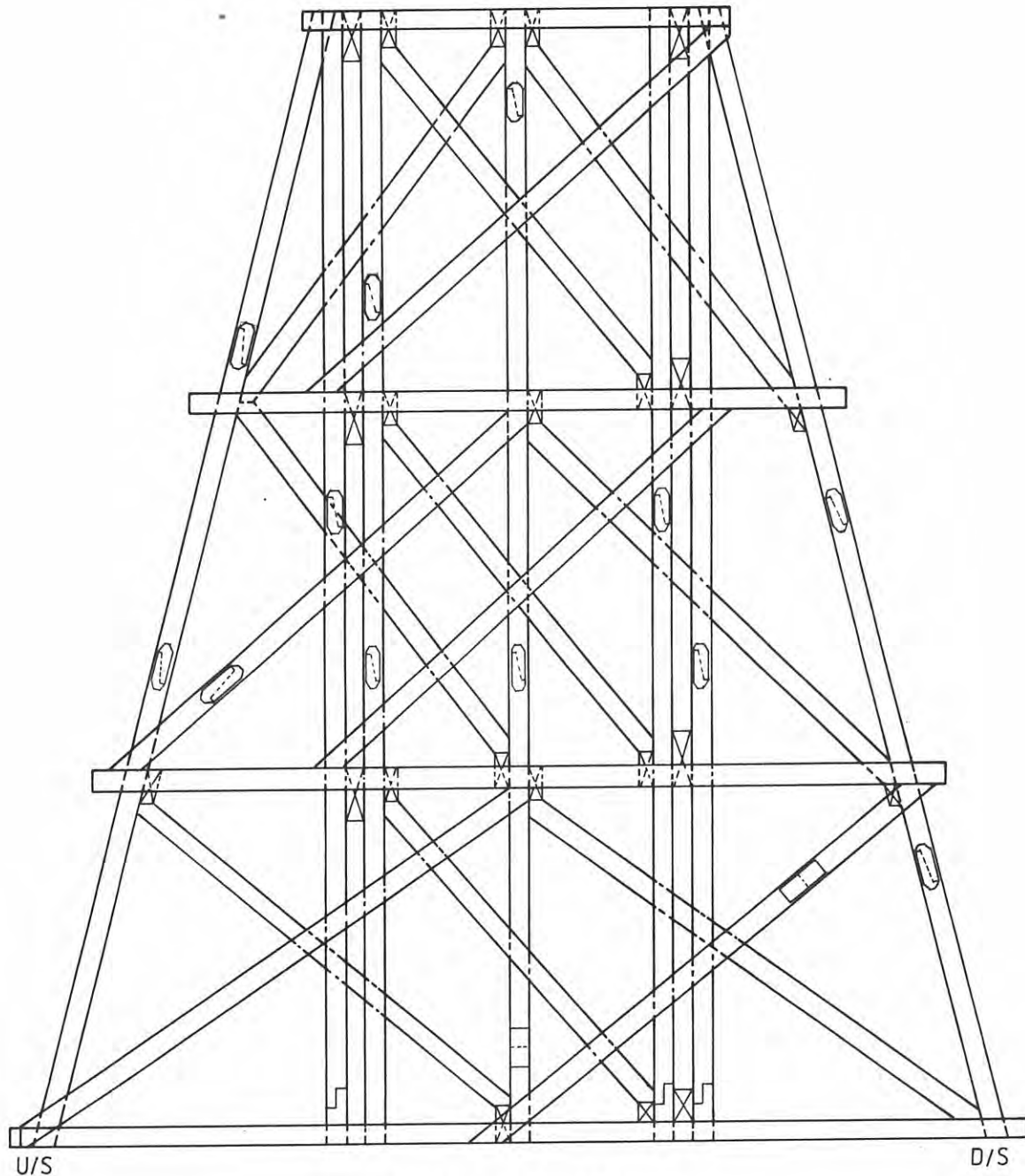


SCARF SPLICE

BUTT SPLICE



SQUARE SCARF
SPLICE



PIER 2 FACE - SPAN B

Title

SPLICE POSITION
PIER 2

FIGURE 2.13

Project



VICTORIA
BRIDGE
PICTON

Reece McDougall
Environmental Management Unit
WATER BOARD.

4 May 1994

Dear Reece,

Plaquing at Prospect

On behalf of the Institution and the Engineering Heritage Committee I extend our sincere thanks for the part you played in organising and running the plaquing ceremony and other activities at Prospect on Sunday, April 18. On a personal note I found it a pleasure to work with you and your team and then to share in the success of the event.

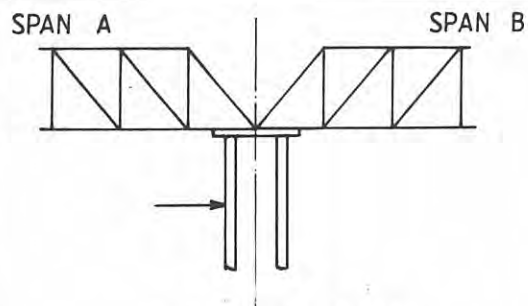
After the formalities, Faith and I and some friends had a delightful picnic lunch.

It must have been a rewarding feeling for your group to have had the good response to the tours from other members of the public from other parts of the picnic areas. The photographs will be a reminder of a pleasant and successful occasion.

We look forward to the same level of cooperation in plaquing other items of the Board's historic works.

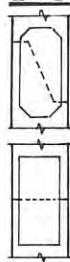
Best wishes,

D. J. Fraser
Plaquing coordinator.



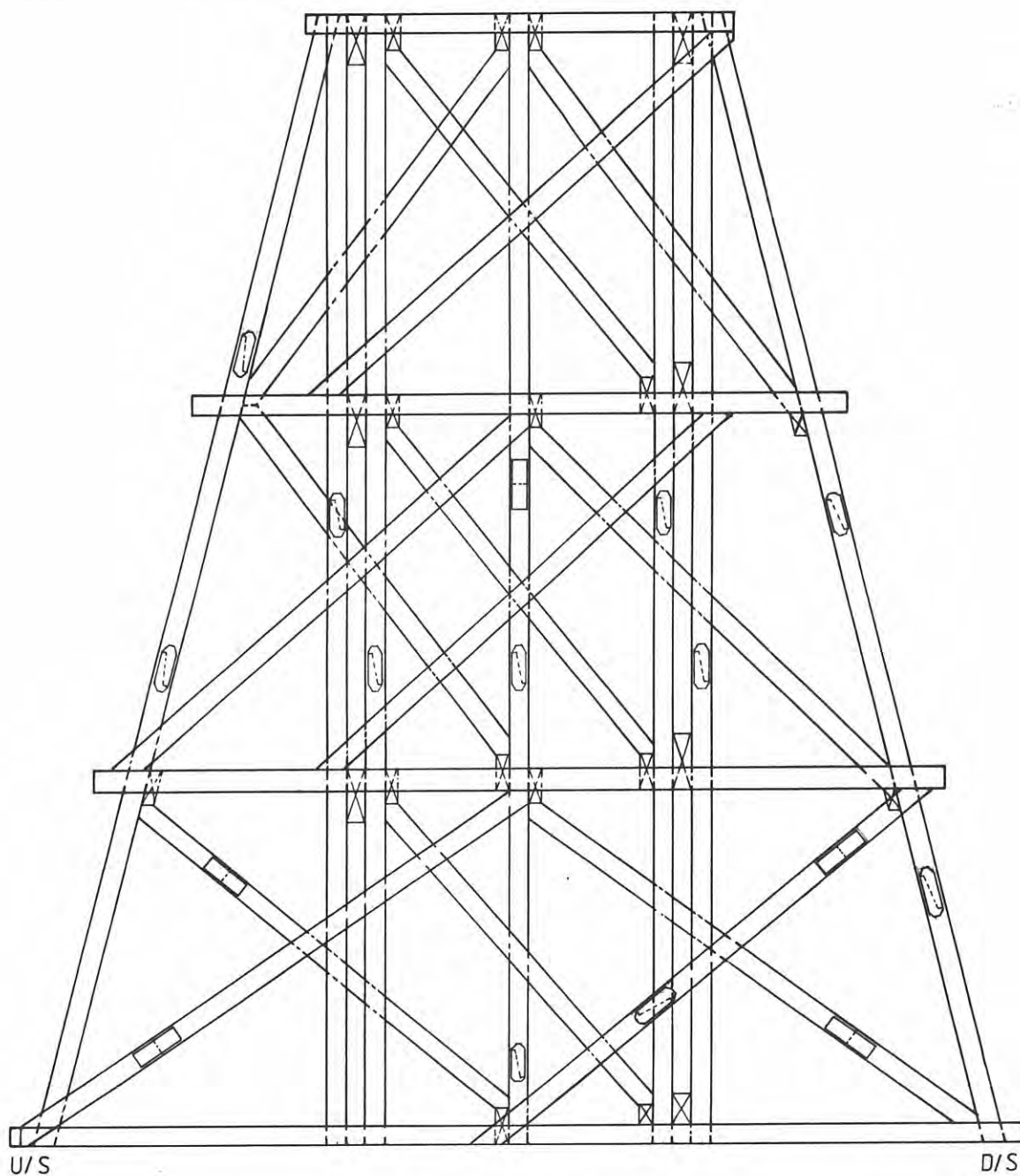
KEY DIAGRAM

LEGEND



SCARF SPLICE

BUTT SPLICE



PIER 1 FACE - SPAN A

(N.T.S.)

Title

SPLICE POSITION
PIER 1

FIGURE 2.11

Project



VICTORIA
BRIDGE
PICTON

Sunday 17 April 1994

1. Fine sunny day
2. Water Board team at Prospect site 9 am
3. Marquee, lectern, PA system, mounted plaques all ready by 10:30 am as other guests began to arrive.
4. Brochures and other literature available.
5. Proceeding began at 11:15 am
6. Alex Baitch, Vice-President I E Aust spoke about plaquing programme and 75th anniversary.
7. Jeff Cameron of Water Board spoke about the technical history of the Prospect Complex.
8. Refreshments in marquee and display of heritage photographs.
9. Tours of the complex began at noon, at 15 minute intervals, each took 45 minutes
10. Some groups stayed on for a BBQ lunch
11. WB staff were still taking small groups of public visitors on tours at 3pm.

Overall a very successful day.

Sunday 17 April 1994

1. Fine sunny day
2. Water Board team at Prospect at 9 am
3. Harpuz, lecture, PA system, mounted photos
- all ready by 10:30 am as other
4. guest before 10:30 am
5. brochures and other literature available.

6. Traversing began at 11:15 am
7. Alex Gault, Vice-President of E.A.S.
8. spoke about planning programme and
9. 75 the anniversary
10. Jeff Anderson of Water Board spoke
11. about the technical history of the Prospect
12. complex.
13. Refreshments in marquee and display of
14. tented photographs.
15. Town of the complex began at noon, at
16. 15 minute intervals, each took 45 minutes
17. Some groups stayed on for a BBQ lunch
18. W.F. staff were still taking small groups
19. of further families on tour of the

Overall a very successful day.

Ms Pam Allan M. P.
P O Box 592
SEVEN HILLS 2147.

3rd May 1994

Dear Ms Allan,

Plaquing at Prospect

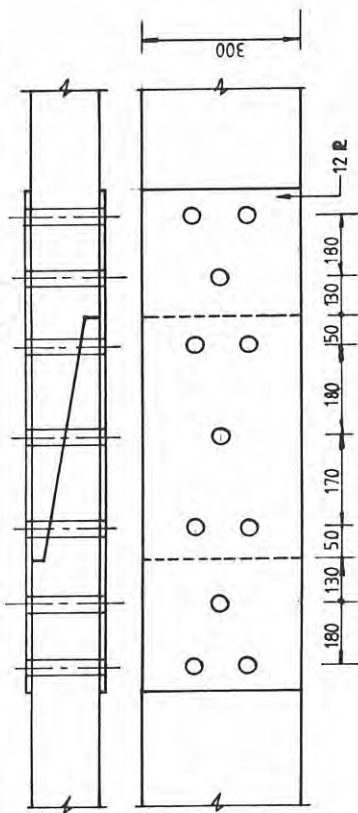
On behalf of the Institution and the Heritage Committee I extend our sincere thanks for your attendance at this ceremony on Sunday 18th April. Your interest in the engineering of the Prospect Complex, of the Institution's plaquing programme and other aspects of the Institution's professional work was greatly appreciated.

After the formalities, my wife and I and friends had a delightful picnic lunch in the continuing balmy sunshine. The Water Board staff had a steady flow of people from the upper picnic area for the tours of the works, so they were pleased with the public interest.

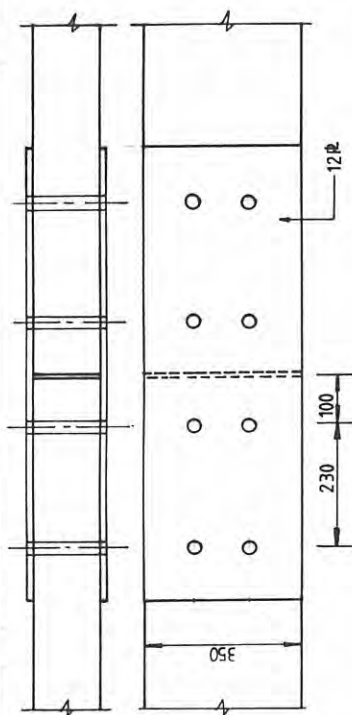
The attached photographs will be a reminder of a pleasant and successful event.

Yours sincerely,

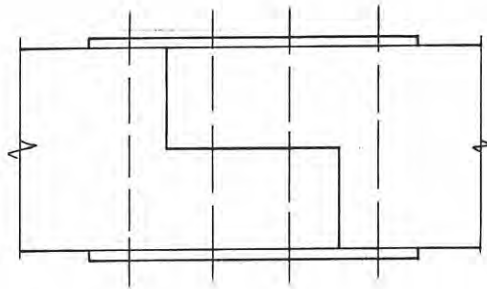
Don Fraser (Dr)
Plaquing Coordinator.



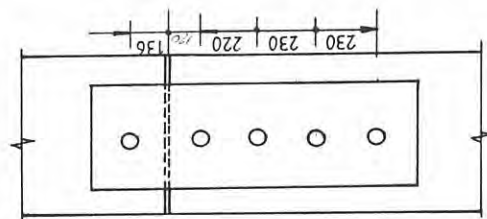
NEW TENSION SPlice JOINT
TRUSS-BOTTOM CHORD



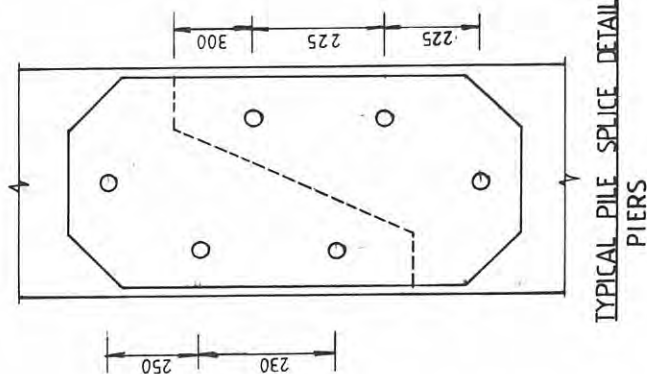
NEW COMPRESSION SPlice DETAIL
TRUSS-TOP CHORD



SQUARE SCARFED BUTT JOINT



SIDE SPlice STRAP
PIERS



TYPICAL PILE SPlice DETAIL
PIERS

bes

baitch engineering services pty ltd

A.C.N. 061 858 580

7 ILLYARIE WAY
CASTLE HILL NSW
AUSTRALIA 2154

PHONE: (02) 899 7790
FAX/PH: (02) 680 3746

INT'L: + (61) (2) 899 7790
MOBILE: 015 214 955

Don Fraser
14 Desley St
VAUCLUSE NSW 2030


Dear Don,

Thank-you for the invitation to the Plaquing function at Prospect on 17 April 94.

Sylvia and I look forward to the occasion.

Prospect Reservoir has a particular attachment to me. My late father, as the Board's Electrical Design and Contracts Engineer, often took us there when we were children. This was both to enjoy the picnic grounds and for an inspection of some aspect or other of the constant development work that was going on at the reservoir.

Yours sincerely,



Alex Baitch

data\ica\025plaq.doc

Likely VP, writing him

18/3/94 He rang me back.
and agreed to
represent the Institution.

me to prepare suitable
info on plaquing
and IE Aust 15th
for his speech.

24/3/94 Rang Reese at WB and gave
Alex's name as Board of Engrs for prog.

28/3/94 Sent him useful info re plaquing
and IE Aust for 15th comment

ELECTRICAL • POWER ELECTRONICS • ENERGY • PLANNING • MARKETING



BOARD OF ENGINEERING

Our Ref: 3/6/13

14 February 1994

Prof D Clyde
Deputy President
The Institution of Engineers, Australia

Dear Doug

**Unveiling ceremony for Prospect Reservoir
Historic Engineering Marker plaques.**

On Sunday, 17 April 1994 three Historic Engineering Marker plaques will be unveiled at the Prospect Reservoir, Sydney, commemorating the engineering significance of the 1888 water supply works to the long term prosperity of Sydney.

As this will be during your presidential year, I have much pleasure in inviting you on behalf of the National Committee on Engineering Heritage and the Sydney Division Engineering Heritage Committee to participate in the activities. If you are able to attend the organising committee is hopeful you will be able to make a short speech dealing with the plaquing programme and the 75th Anniversary of the Institution. A flyer regarding the location and timing of this ceremony is attached.

I hope you are able to accept.

Yours sincerely

R A Breen
Executive Officer

RAB:md

att

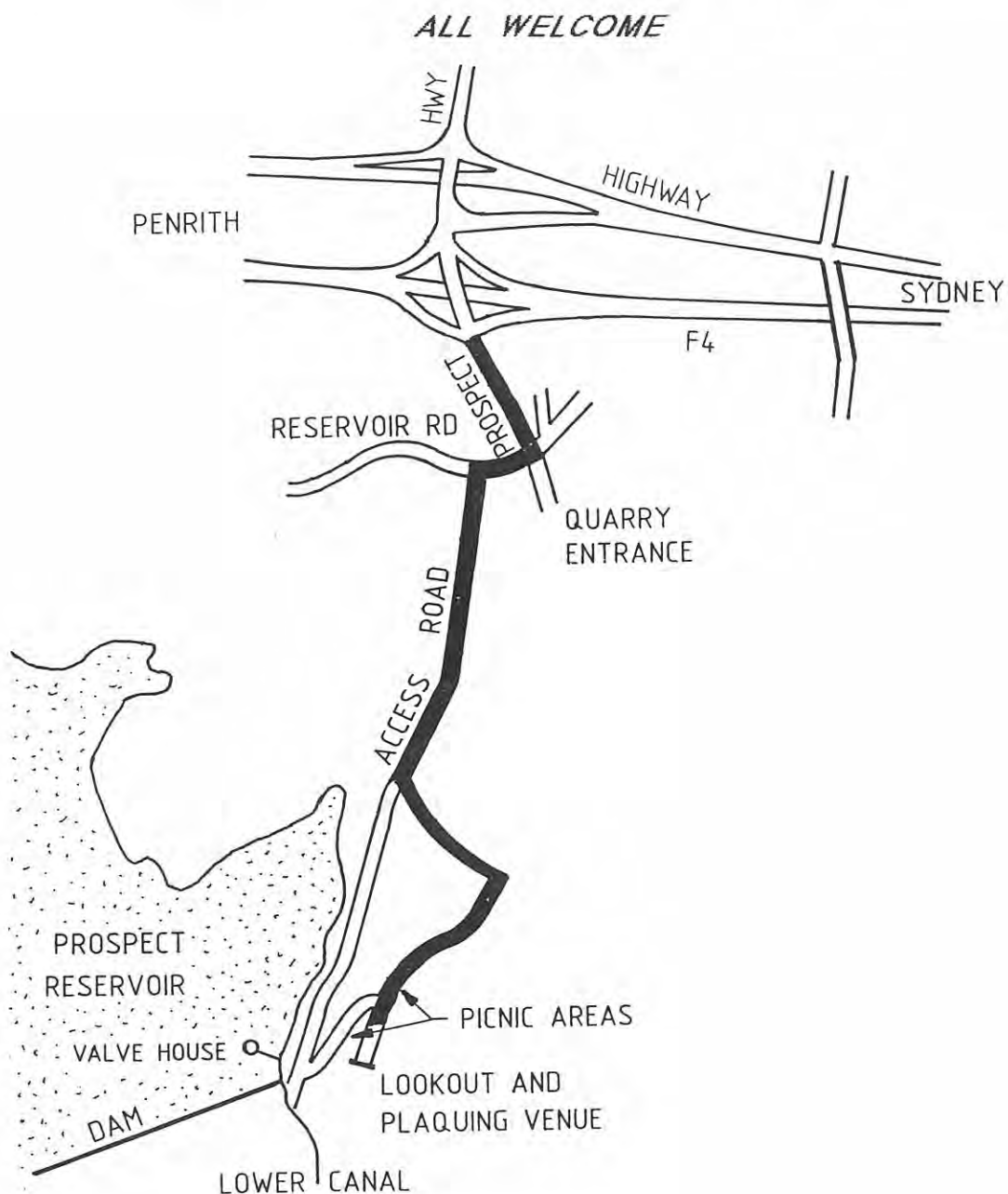
- c A Moulds, Chairman, National Committee on Engineering Heritage
 Dr D Fraser, Convenor, Commemorative Plaque Sub-Committee
 I Bowie, Chairman, Sydney Division Engineering Heritage Committee.

Clyde.boe

PLAQUING AND PICNICING AT
PROSPECT RESERVOIR

ON SUNDAY 17TH APRIL

THE ENGINEERING SIGNIFICANCE OF THESE 1888
WATER SUPPLY WORKS TO THE LONG-TERM
PROSPERITY OF SYDNEY WILL BE COMMEMORATED
11 - 11:30AM WITH THE UNVEILING OF THREE
BRONZE PLAQUES, FOLLOWED BY A BYO PICNIC.



HERITAGE ON THE MOVE

Calendar

Heritage Plaques

Heritage plaques highlighting aspects of Manly's history
21 April
Contact: Phillipa Charley
Manly Council
949 1776

MAROUBRA

Family Trees

Workshop on family history
23 April 1pm-3pm
Research Room, Maroubra
Contact: Hazel Brombey
Cape Banks Family History
Society Inc.
398 5179

Heritage on the Move

Display of heritage through family history
18-22 April
Bowen Library
Contact: Hazel Brombey
Cape Banks Family History
Society Inc.
398 5179



MOAMA

Walk

Take a walk in the Moama Cemetery heritage area in conjunction with the Berryman Reunion
23 April- 9am-5.30pm
24 April -9am-4.30pm
Perricoota Road
Contact: Nancy Milgate
Moama Cemetery Management Committee
(054) 82 2692



MOSMAN

Photo Exhibition

"Away of Life" An exhibition of Australian bush photographs
17-30 April, 10am-5pm at
Mosman Cache Shopping Centre,
Military Rd
Contact: Sue Blakeney
969 8596

NEWCASTLE

Bus & Train Tours

"Hunter Heritage on the Move"
Veteran train ride to Newcastle railway station; heritage Tram ride; explore Newcastle's heritage .
Tours depart Newcastle station 11am & 2pm
Contact: Mary Leopold
(049) 26 1561



Talk & Tour

Explore the convict stockade
2pm at the Hunter Heritage Centre
Contact: Mary Leopold
HUNTER REGIONAL
COMMITTEE NATIONAL TRUST
(049) 26 1561

NEWTOWN

Heritage Day Fair

Camperdown Cemetery tours, band performances & heritage concert
23 April, 11am-5.30pm
Cemetery tours \$3
St. Stephens Church, Newtown
Contact: Karen Fong
The Friends of St Stephens
516 2941

NORTH SYDNEY

Photo Exhibition

Photographs & memorabilia of North Sydney's hidden war memorials
28 March-30 April
Library Hours Stanton Library,
234 Miller St
Contact: Margaret Park
North Sydney Council
955 5889

History in Architecture

A lecture by Historian Robert Irving
20 April, 6.30pm-8.30pm
Stanton Library,
Contact: Margaret Park
North Sydney Council
955 5889

Berry Island Walk

A walk through North Sydney & Berry Island Reserve
23 April, 2pm-4pm
Meet at Waverton Station
Contact: Margaret Park
North Shore Historical Society
955 5889

Heritage Display

North Sydney
April 12-June 12, Mon-Thur 9am-9pm
Fri & Sat 9am-5pm, Sun 2pm-5pm
Stanton Library
Contact: Margaret Park
North Sydney Council
955 5889

Glory Boxes Exhibition

Featuring the history of Glory Boxes
17 April-27 May
Wed 12pm-4pm. Sun 1pm-4pm
\$1 adults 50c conc
Don Bank Museum, 6 Napier Street
Contact: Margaret Park
North Sydney Council
955 5889

Open Day

Visit the National Maritime Museum Shipyard at the Old Quarantine Depot, Berry's Bay
17 April, 1pm-4 pm
Guided walk from Waverton Station at 1pm Book
Contact: Margaret Park
North Sydney Council & National Maritime Museum
955 5889

PARRAMATTA

Display & Open House

Displays of shingle splitting, flowers, historic documents & photos, vintage cars, arts & craft.
17 April, 10am-4pm, \$2.50
Historical Society House,
63 Hassell Street
Contact: Barbara Murray
Parramatta & District Historical Society
748 7022



PORT MACQUARIE

Transport Display

A display of photographs and books illustrating earlier forms of transport
11-29 April, 9.30am-6pm Mon-Fri
9am-12pm Saturday
Hastings Library Clarence St
Contact: Diane Scott
(066) 83 1658



PROSPECT

Plaque & Picnic Day

17 April 11am-11.30am followed by BYO picnic Prospect Reservoir
Contact: Reece McDougall
Sydney Water Board & The Institution of Engineers
350 6892

RAYMOND TERRACE

River Transport

Week long display of river transport
18-23 April, Library Hours
Coach & boat trip, 17 April
Raymond Terrace Library
Contact: Elaine Hall
(049) 87 3477



ROSEVILLE

Art Exhibition

Paintings by Patricia Moy
April 15-28,
Opening Night-7pm-9pm.
Mon-Fri- 9am-4.30pm
Sat & Sun 10am-5pm
Contact: Jenny Hors
Ku-ring-gai Community Art Centre
498 0729

RYDE

Photographic Display

"Explorers on the Move"
18 April, Eastwood Shopping Centre
Contact: R. Buttery
Brush Farm Historical Society
874 4191

COFFS HARBOUR

Heritage Launch

"Step Back in History"
April 17, 2pm-opening day
1.30pm-4.30pm, Tues, Wed, Thurs,
Sun, \$1 adults 20c conc
Coffs Harbour & District
Historical Museum
Contact: The Coffs Harbour
& District Historical Museum
& the Historical Society
(066) 52 5794

Historical Cruise

"In the Wake of the Endeavour"
A 3.5 hour tour to the Solitary
Islands
17 & 24 April, departs 8 am
\$20 per person
Contact: The Coffs Harbour
& District Historical Museum
& Historical Society
(066) 53 2168

Illustrated Talk

"The First Hundred Years of
the Botanic Garden"
21 April, 9.30am-11.30am
\$2.50 per person inc. morning tea
Contact: North Coast Regional
Botanic Garden
(066) 52 1909



COWRA

Cowra Heritage

Come and enjoy the Heritage
Walk, Lachlan Valley Railway
& the POW Campsite
17-24 April
Contact: Ann-Marie Harris
Cowra Tourist & Development
Corporation
(063) 42 4333

CRONULLA

Heritage Houses Walk

A visit to heritage houses in the
Hurstville & Penshurst area
23 April from 1pm
Contact: Joan Hatton
SOUTH SYDNEY BRANCH
NATIONAL TRUST
580 4040



DORRIGO

Dorrigo Museum

Inspect the Museum displays
17-24 April
Guided walk of historic locations
on 23 April, 11am-3pm
\$1 adults 20c conc
Contact: K. Bowie
Dorrigo Historical Society
(066) 57 2804

GLEBE

Cook's Tour

A tour of four surviving Griffen
kitchens in Telopea & Castlecrag
17 April, 10.30 am
\$25 including lunch & transport
Contact: Dawn Lowrie
Historic Houses Trust
692 8366
Bookings essential



GORDON

Ku-ring-gai Bushcare

An introduction to bushcare
designed for Ku-ring-gai residents
17 April, 9am-1pm
Ku-ring-gai Wildflower Garden
Contact: Adam Richards
Ku-ring-gai Council
498 0888



On the Move

A heritage walk around the main
street areas of Turramurra
27-28 April, 9.45am for 10am, \$5
Bookings essential
Contact: Ku-ring-gai Council
Recreation Services
498 0896

Turramurra Heritage

Displays of photographs,
memorabilia & artefacts in shops
around Turramurra
25-30 April, 9am-5.30pm
Contact: Ruth Denison
Ku-ring-gai Council
498 0906

Past, Present, Future

A program designed to capture the
memories of long-time residents of
Turramurra
April 28, 1pm-4pm
Turramurra Masonic Hall
Contact: Ruth Denison
Ku-ring-gai Council
440 8379

Hillview Happenings

A heritage tour of Hillview
29 April, 9.45am for 10am, \$5
Bookings essential
Contact: Ku-ring-gai Council
Recreation Services
498 0896

Bungaroo Walk

A walk to commemorate the route
taken by Governor Arthur
Phillip in April 1788
20 April, 9.45am-12 noon, \$5
Bookings essential
Contact: Ku-ring-gai Council
Recreation Services
498 0896

GORE HILL

Cemetery Tour

A guided tour of Gore Hill Cemetery
24 April, 1.30pm-4pm
Gore Hill Cemetery, St. Leonards
Contact: June Adams
Friends of Gore Hill Cemetery
349 2631

GOSFORD

Kendall Cottage Fair

Over 80 variety stalls, with
entertainment all day
23 April, 10am-4pm
\$2 adults \$1 conc
Kendall Cottage,
27 Henry Kendall Street
Contact: Elaine Fry
Brisbane Water Historical Society
(043) 25 2270

GULGONG

Henry Lawson Display

A variety of events including
displays of Lawsonia, library
research material and art
17-24 April, 10am-12 noon
\$1 adults 20c conc
Henry Lawson Centre
Contact: Therese Lane
Henry Lawson Society of NSW
(063) 74 2049

HABERFIELD

Fences & Fretwork

Walking tour of Haberfield's
Stanton Estate
17 April, 1.30pm-4.30pm.
\$10 non-members, \$5 members
Book by phone
Contact: Vince Crow
The Haberfield Association
798 3835



HARTLEY

Cars & Tourism

A pictorial display tracing the
development of the motor car and
its impact on tourism
17-24 April, 10am-5pm
Hartley Historic Site
Contact: Historic Sites Officer
(063) 55 2117

HAWKESBURY

Heritage Week Tours

17 April 10am-4pm
St. John of God Hospital, Richmond
Contact: Jan Barkley
Hawkesbury Historical Society Inc.
(045) 77 3688

KEMPSEY

Angus McNeil Display



A display of framed photographs
printed from the Angus McNeil
Glass Negative collection
15 March-30 April, \$2 adults
\$1 conc, \$5 families, 10am-4pm
daily
Kempsey Museum
Contact: Museum
Macleay River Historical Society
(065) 62 7572

LISMORE

Photo Exhibition

A pictorial display of early
railway history
17 April-mid May
10am-4pm weekdays, \$2
Contact: Geoff Stewart
NORTHERN RIVERS REGION
NATIONAL TRUST
(066) 20 1673

LOFTUS

Travelling By Tram

Display of trams, photographs and
relics plus museum tram rides
17, 20, 24, 25 April
Sundays & Public Holidays
10am-5pm Wed 9.30am-3.30pm
\$8 adults \$4 conc
Sydney Tramway Museum,
Old Princes Highway
Contact: Peter Kahn
Sydney Tramway Museum
542 3646



MANILLA

Manilla Museum

18, 20, 22, 24 April 2pm-4 pm
23 April 9am-12 noon
\$1 adults 50c conc
Manilla Museum, 197 Manilla St
Contact: Wayne Bearup
Manilla Historical Society
(067) 85 1882

Historic Homes Tour

Tour the heritage homes of Manilla
17 April at 1.30pm, \$3
Contact: Wayne Bearup
Manilla Historical Society Inc.
(067) 85 1882

MANLY

Manly Walk & Picnic

Walk the centre of Manly
24 April, 10.15am-4pm
\$25 \$20 conc
includes lunch & booklet
Contact: Sue Kennedy, TEC Tours
247 4714
Bookings essential

NASA Astronaut Thrills IEAust Engineers, Families & Friends in Space

Colonel John Blaha, NASA Astronaut and commander of current Space Shuttle Missions held us spellbound as he took us up into Space. He showed us how they operate and carried out a series of experiments to collect data for future space Travel and to search for answers to many earthly medical, science and materials problems.

For the first time our Auditorium was filled to capacity, and on a Saturday, attended by Engineer, Space and Quality Professional dads and mums and their children. Herein lies a message to do more with families and our colleagues and to take a broader view of our mission in life.

Quality and Excellence in Organisations - This was strongly identified in its people and their dedication to their cause and their team, and to the need for excellence in their 'Smart' expertise. The space crew are essentially engineers and medical doctors.

Gravity Masks the Answers -

The removal of gravity has come up with many surprising answers and raised many new questions.

Did you know that face wrinkles disappear in space making the crews look younger? Sadly, though, the face wrinkles reappear an hour after the crews return to earth.

We made a lot of new friends who want to get more involved with us and we are invited to participate with the National Space Society later in the year with another visiting Astronaut.

Surely our National Committee on Space Engineering will share more of their Space with us. We want more than Pay TV and YUPPIE Phones.

Neville Lindfield Seager
Organiser

New Technology Forum

Presented by M.M.Cables

To encourage innovation, the Board and IEAust are jointly sponsoring of **New Technology Forums**. Innovative, technology-based Australian companies are provided with the opportunity to present their novel technology to an invited audience, thereby increasing awareness within the engineering, academic and industrial communities of the development within Australia of innovative technologies and their applications.

Date: Wednesday, 30th March, 1994

Venue: IEAust, Auditorium
118 Alfred street
Milsons Point

Time: 6.00 for 6.30 pm start

Cost: \$30.00 includes dinner
at Rest Hotel

RSVP: Christine Mason by the 23/3/94,
(02) 929 8544 Fx: (02) 954 0393

Enquiries please contact Christine Mason

Plaquing and Picnicing at Prospect Reservoir

Sunday, 17th April

The engineering significance of these 1888 water supply works to the long-term prosperity of Sydney will be commemorated 11 - 11.30 am with the unveiling of three Bronze Plaques, followed by a BYO picnic.

Venue: Prospect Reservoir
Picnic Grounds
Off Reservoir Road

Sydney Division's Suggestion Box

Do you have any suggestions on how to improve Sydney Division's service to members?

All suggestions are confidential and will be seriously considered. You can post your suggestion to:
The Institution of Engineers, Aust
PO Box 138 (Level 1, 118 Alfred St)
MILSONS POINT NSW 2061

Grow your business knowledge

"Hands-on" Business
Development Training
6 months - part time

Do you want to expand, review or startup a new business or launch a new product or service?

Workshop programs provide practical experience in business planning under the guidance of successful business people. They provide the knowledge and skills to enable you to develop real business plans for growth. And you will learn how to control risk.

Two programs start on 12 May for

- * 1 or 2 people from a small business
- * 3 to 5 people from an organisation.

For an information package
Phone (02) 963 7636 or (02) 247 2490

NSW Enterprise Workshop

The Enterprise Workshop is a cooperative venture of Industry and Government. The program qualifies as eligible under the Training Guarantee Act. Proudly sponsored by: Commonwealth Bank, Chamber of Manufactures of NSW, University of Technology Sydney, Association of Taxation and Management Accountants, and MY Business Magazine.

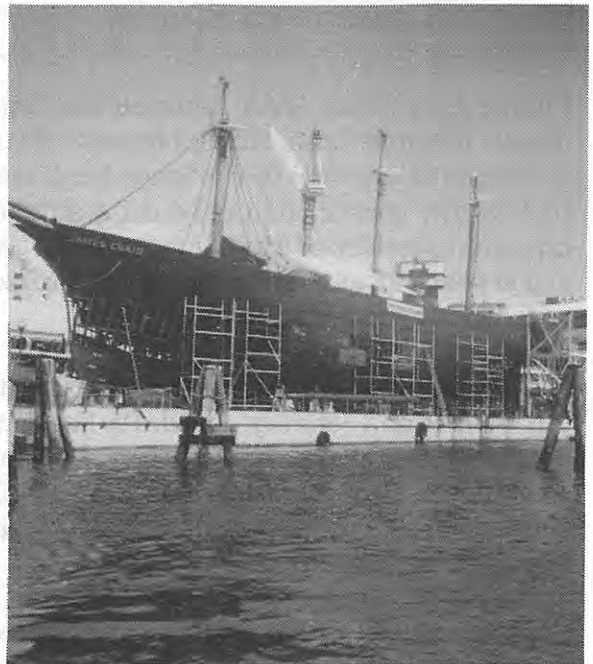
Freds Group Next Meeting

The next meeting of the **Freds Group** will be at 2.00 pm on Saturday 19th February 1994. At the Institution of Engineers, Australia, 118 Alfred Street, Milsons Point.

Freds group meets quarterly, other 1994 meetings are scheduled for May, August and November (dates to be announced).

All IEAust members welcome

Ship Ahoy!



Have you ever wanted to be involved in the restoration of an Historic Sailing Ship?

Well you can, as a volunteer with the Sydney Maritime Museum. You will find the experience rewarding.

The Museum is looking for volunteers, sponsors and donations to help with the restoration of the James Craig, on display at Darling Harbour.

The restoration involved dividing the ship into nine sections. The first four sections, in the amidships area, are being done presently. Each section, which goes from the keel to the gunwale, first has the rust removed from all the frames, floors and hull plating and is then comprehensively surveyed. Fabrication of the new hull plates is performed by volunteers whilst the frames and reverse frames are made by the Hunter Valley Training Corporation and contractors.

Continued on page 5

14/4/94

9.30 am

Site meeting with.

Colleen JOHNSON, Barry RUSSELL, } WB
Eric DZENIS, Reese McDOUGALL, }
Don FRASER (IE Aust).

also Jackie LOW, Max KING. (both WB)
Final site is the lower Maunders lookout.

WB team discussed all matters
incl location of marquee, photo display,
parking, toilets, marshalling,
sign posting, location of lecture.

Overall they are putting a lot of planning
effort to make the event a success.

BBQ facilities at the lower lookout
but an excess can use the
Upper lookout area.

Did a "dry run" of the tour, it's a walking tour.
45 min req'd

Marquee will be set up starting 7am
Other WB team arriving 9am.

2/3/94

WB hope to organise tours
of the 3 items starting at
11.30 pm and each 15 minutes

WB to prepare an A4 brochure
and a picture display



DJF to get Institution banner.
ordered 18/3/94

Generally the procedure in the
Institution's booklet will
be followed.

17/3/94

WB Manager for Prospect
is happy with the words for
the works as they currently
are.

23/3/94

Final plaque wordings approved

8/4/94

Rang Reere McDougall (WB)
All arrangements OK
Plaques arrived.

18 Feb 1994

Wordings of plaques approved
and checked, ready for casting

Post separately to Reece McDougall
at Water Board.

NT has information re ceremony
and picnic on 17 April, will
put something in their journal.

24/2/94

AOK for Prospect
Meeting with Chris Grey next week?

Chris Grey not handling this event

2/3/94
2pm

Meeting at Water Board with
Reece McDougall and
Joanna Woutersz of Corporate
Communications.

WB going to send invitations
to Minister for Planning & Housing,
Robert Webster, WB rep,
local council, local members.

Also media invitations and releases

WB ~~was~~ Chairman or Managing Director
may act as MC intro
Webster & IE Aust rep.

PLAQUES AT PROSPECT

20/1/94 - Site visit with Chris Gray, Consultant to Water Board on functions, media etc. and Colleen Johnson (WB) also Barry Russell & Peter Arrow
7954323
later Roy Newman

Unveil plaques 11-11-30 am
Work tours?
Picnic lunch

DJF send out IE Aust invitations
NT Magazine - by mid-Feb

but wait Chris makes firm arrangements with WB, meeting later today with Reece McDougall.

24/1/94 - ~~Reece~~ Reece McDougall (WB) rang to say a submission - memo going to General Manager.
269-6892

2/2/94 - Rang him - plaquing approved
question of WB resources re tours

8/2/94 ✓ DJF to go ahead with IE Aust invitations
8/2/94 ✓ Note to NT Magazine
8/2/94 ✓ Check our mailing now that Paul Hegenbach is not Secretary - has Cowan got facilities for mailing?
Send to Ren Beckett
8/2/94

MATTHEWS BRONZE PTY. LTD. TRADING AS

ARROW ENGRAVING & FOUNDRY

123-129 BERNARD STREET, CHELTENHAM, VICTORIA
ADDRESS ALL CORRESPONDENCE TO P.O. BOX 215 CHELTENHAM 344
TELEPHONE (032) 555 0755 FAX (032) 5 4 1011

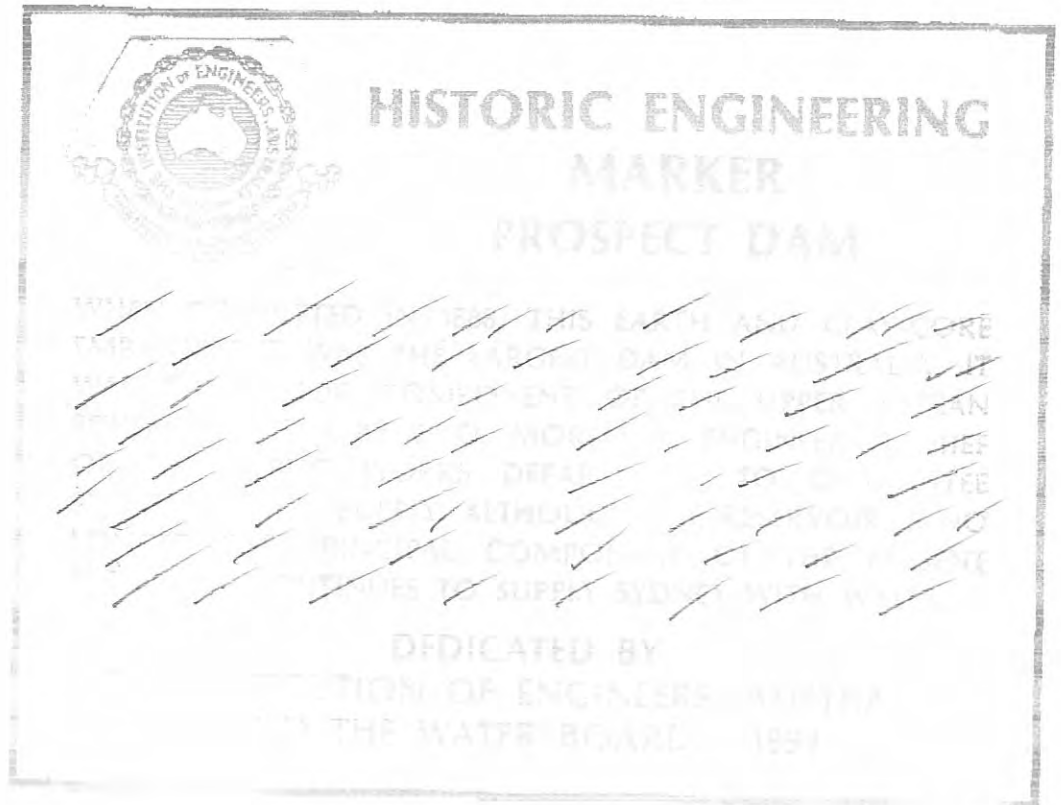
PAGES 321 0000000000

Handwritten signature: Ross



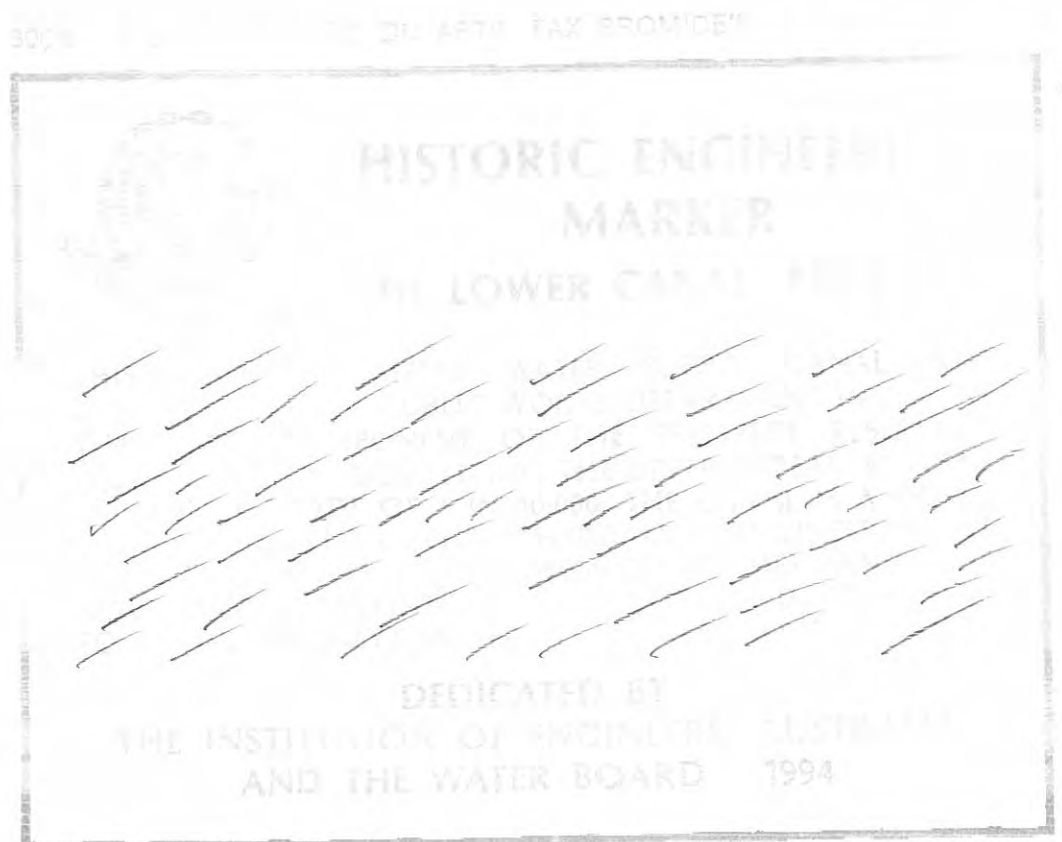
Phoned Rob Green

*OK
23/3/94*



OK 23/3/94

Phoned Rob Green



OK 23/3/94

Facsimile:

Date: 10 March 1994

Total no. pages
(including this one)

2

To: Arrow Engraving and Foundry Company

Fax number: (03) 553 2086

File: 3/6/86

From: Robert Breen, Executive Officer, National Committee on Engineering

Subject: Heritage
Design Manufacture and Supply of Bronze Plaques


The
Institution
of Engineers,
Australia

NATIONAL OFFICE

*17/3/94 WB Manager. for
Prospect happy with these words.*

Thank you for your fax dated 15 February 1994 in which ^{you} provided bromides of plaques for the Sydney water supply complex at Prospect.

On reflection my principals have decided significant changes to the wording of the three plaques is required. Please produce new designs with the following wording and fax a copy of the bromides to me for approval before manufacture:

HISTORIC ENGINEERING MARKER

PROSPECT DAM

WHEN COMPLETED IN 1888, THIS EARTH AND CLAY-CORE EMBANKMENT WAS THE LARGEST DAM IN AUSTRALIA. IT WAS THE MAJOR COMPONENT OF THE UPPER NEPEAN SCHEME DEvised BY E O MORIARTY, ENGINEER-IN-CHIEF OF THE PUBLIC WORKS DEPARTMENT, TO GUARANTEE SYDNEY'S WATER SUPPLY. ALTHOUGH THE RESERVOIR IS NO LONGER THE PRINCIPAL COMPONENT OF THE PRESENT SYSTEM, IT CONTINUES TO SUPPLY SYDNEY WITH WATER.

DEDICATED BY
THE INSTITUTION OF ENGINEERS, AUSTRALIA
AND THE WATER BOARD 1994

HISTORIC ENGINEERING MARKER

THE LOWER CANAL, PROSPECT

THIS EIGHT KILOMETRE WATER SUPPLY CANAL WAS COMPLETED BY THE PUBLIC WORKS DEPARTMENT IN 1888 AS THE THIRD COMPONENT OF THE PROSPECT RESERVOIR WORKS, THEREBY COMPLETING THE UPPER NEPEAN SCHEME. LAID ON A GRADE OF 1 IN 10,000, THE CANAL IS A GOOD EXAMPLE OF 19TH CENTURY HYDRAULIC ENGINEERING. IT INCLUDES SPILLWAYS, STORMWATER FLUMES AND THE NOW-DISUSED BOOHTOWN AQUEDUCT AND CONTINUES TO CONVEY SYDNEY'S WATER TO PIPEHEAD AT GUILDFORD.

DEDICATED BY
THE INSTITUTION OF ENGINEERS, AUSTRALIA
AND THE WATER BOARD 1994



PROSPECT VALVE HOUSES

THESE VALVE HOUSES WERE COMPLETED IN 1887 AND ARE EXCELLENT EXAMPLES OF COLONIAL ARCHITECTURE. UNDER THE UPSTREAM HOUSE THERE ARE THREE LEVELS OF VALVES FOR DRAWING OFF WATER FROM THE RESERVOIR. THE DOWNSTREAM HOUSE CONTAINS VALVES AND METERS TO CONTROL AND MEASURE THE FLOW OF WATER. THE VALVES WERE SUPPLIED BY GLENFIELD OF KILMARNOCK, SCOTLAND AND INSTALLED IN 1882, THE METERS WERE ADDED IN 1907. THIS ORIGINAL SYSTEM REMAINS IN OPERATION.

DEDICATED BY
THE INSTITUTION OF ENGINEERS, AUSTRALIA
AND THE WATER BOARD 1994

The layout of the plaques including the IEAust logo is to be as in your 15 February fax.

Any inconvenience caused by these changes is regretted.

R A Breen
Executive Officer

c.c. Dr Don Fraser, Convenor, Commemorative Plaque Sub-Committee

MATTHEWS BRONZE PTY. LTD. TRADING AS

ARROW ENGRAVING & FOUNDRY

123-129 BERNARD STREET, CHELTENHAM, VICTORIA
ADDRESS ALL CORRESPONDENCE TO P.O. BOX 213, CHELTENHAM 3192
TELEPHONE (03) 555 2922 FAX (03) 553 2086 (008) 33 5692

PAGES SENT INC. COVER

2

DATE

16.3.94

TO INSTITUTE OF ENGINEERING

ATTENTION

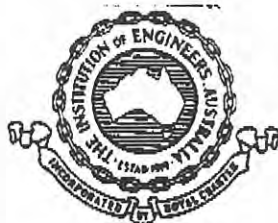
ROR BREEN

FROM

LAURIE ROSSON

PLEASE CHECK SPELLING & LAYOUT
ADVISE IF EVERYTHING IS O.K.

300% 4 BOSSES LOGO ON ART!! FAX BROMIDE!!



HISTORIC ENGINEERING MARKER THE LOWER CANAL, PROSPECT

THIS EIGHT KILOMETRE WATER SUPPLY CANAL WAS COMPLETED BY THE PUBLIC WORKS DEPARTMENT IN 1888 AS THE THIRD COMPONENT OF THE PROSPECT RESERVOIR WORKS, THEREBY COMPLETING THE UPPER NEPEAN SCHEME. LAID ON A GRADE OF 1 IN 10,000 THE CANAL IS A GOOD EXAMPLE OF 19TH CENTURY HYDRAULIC ENGINEERING. IT INCLUDES SPILLWAYS, STORMWATER FLUMES AND THE NOW-DISUSED BOOHTOWN AQUEDUCT AND CONTINUES TO CONVEY SYDNEY'S WATER TO PIPEHEAD AT GUILDFORD.

DEDICATED BY
THE INSTITUTION OF ENGINEERS, AUSTRALIA
AND THE WATER BOARD 1994

, Emma

300% 4 BOSSES LOGO ON ART!! FAX BROMIDE!!



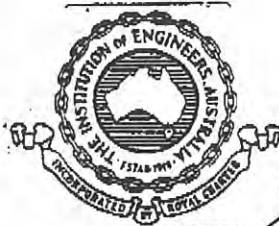
HISTORIC ENGINEERING MARKER PROSPECT VALVE HOUSES

THESE VALVE HOUSES WERE COMPLETED IN 1887 AND ARE EXCELLENT EXAMPLES OF COLONIAL ARCHITECTURE. UNDER THE UPSTREAM HOUSE THERE ARE THREE LEVELS OF VALVES FOR DRAWING OFF WATER FROM THE RESERVOIR. THE DOWNSTREAM HOUSE CONTAINS VALVES AND METERS TO CONTROL AND MEASURE THE FLOW OF WATER. THE VALVES WERE SUPPLIED BY GLENFIELD OF KILMARNOCK, SCOTLAND AND INSTALLED, 1882, THE METERS WERE ADDED IN 1907. THIS ORIGINAL SYSTEM REMAINS IN OPERATION

IN DEDICATED BY
THE INSTITUTION OF ENGINEERS, AUSTRALIA
AND THE WATER BOARD 1994

PLEASE CHECK SPELLING & LAYOUT
ADVISE IF EVERYTHING IS O.K.

300% 4 BOSSES LOGO ON ART!! FAX BROMIDE!!



HISTORIC ENGINEERING MARKER *THE* PROSPECT DAM

WHEN COMPLETED IN 1888, THIS EARTH AND CLAY-CORE EMBANKMENT WAS THE LARGEST DAM IN AUSTRALIA. IT WAS *A* MAJOR COMPONENT OF THE UPPER NEPEAN SCHEME DEVISED BY E. O. MORIARTY, ENGINEER-IN-CHIEF OF THE PUBLIC WORKS DEPARTMENT, TO GUARANTEE SYDNEY'S WATER SUPPLY. ALTHOUGH THE RESERVOIR IS NO LONGER THE PRINCIPAL COMPONENT OF THE PRESENT SYSTEM, IT CONTINUES TO SUPPLY SYDNEY WITH WATER.

DEDICATED BY
THE INSTITUTION OF ENGINEERS, AUSTRALIA
AND THE WATER BOARD 1994

Full stop

Facsimile:

Date: 18 March 1994

Total no. pages
(including this one)

3

To: Arrow Engraving and Foundry Co



The
Institution
of Engineers,
Australia

NATIONAL OFFICE

Fax number: (03) 5532086

File: 3/6/86

From: Robert Breen, Executive Officer, National Committee on Engineering

Heritage
Subject: DESIGN, MANUFACTURE AND SUPPLY OF BRONZE PLAQUES

Thank you for your fax dated 16 March 1994 containing designs for plaques for the Prospect water supply scheme. My principals have inspected the designs and have advised the following corrections are required:

THE LOWER CANAL, PROSPECT plaque: after "10.000", insert a comma;

PROSPECT VALVE HOUSES plaque: second last line, between the words "INSTALLED" and "1882", insert "IN";

PROSPECT DAM plaque: after " ... IN AUSTRALIA", insert a full stop in lieu of the comma;
between the words "WAS" and "MAJOR", amend "A" to read "THE".

These changes are illustrated in the attached copy of your fax.

When the changes have been made please fax the bromides to me for final checking before manufacture.

Your urgent attention to this matter is now requested as time is getting short. The plaque unveiling ceremony is scheduled for Sunday 17 April at the Prospect Reservoir.

When completed the plaques are to be delivered to:

Mr Reece McDougall
Environmental Management Unit
Water Board
PO Box A53
SYDNEY SOUTH NSW 200.

The invoice should be sent to me at the address shown below.

Robert Breen
Executive Officer

c.c. Dr Don Fraser, Convenor, Commemorative Plaque Sub-Committee
Ian Bowie, Chairman, Sydney Division Engineering Heritage Committee

} by mail

ARROW
ENGRAVING & FOUNDRY

123-129 BERNARD STREET, CHELTENHAM, VICTORIA
ADDRESS ALL CORRESPONDENCE TO P.O. BOX 213, CHELTENHAM 3192
TELEPHONE (03) 555 2922 FAX (03) 553 2086 (008) 33 5692

PAGES SENT INC. COVER

2

DATE

15.2.94

TO INSTITUTE OF ENGINEERS

ATTENTION

ROBERT BREED

FROM

LAURIE ROSSON

PLEASE CHECK SPELLING & LAYOUT
ADVISE IF EVERYTHING IS O.K.

300% 4 BOSSES LOGO ON ART!! FAX BROMIDE!!



**HISTORIC ENGINEERING
MARKER**
THE LOWER CANAL, PROSPECT

THIS EIGHT KILOMETRE WATER SUPPLY CANAL WAS COMPLETED BY THE PUBLIC WORKS DEPARTMENT IN 1888 AS THE THIRD COMPONENT OF THE PROSPECT RESERVOIR WORKS THUS TERMINATING THE UPPER NEPEAN SCHEME. LAID ON A GRADE OF 1 IN 10,000 THE CANAL IS A GOOD EXAMPLE OF 19TH CENTURY HYDRAULIC ENGINEERING AND INCLUDES SPILLWAYS, STORMWATER FLUMES, AND THE NOW DISUSED BOOHTOWN AQUEDUCT. IT HAS CONVEYED SYDNEY'S WATER TO PIPEHEAD AT GUILDFORD FOR OVER 100 YEARS.

DEDICATED BY
THE INSTITUTION OF ENGINEERS, AUSTRALIA
AND THE WATER BOARD 1994

OK
Feb 1994

SEPARATELY !!

Post pages to

Reece McDougall

15 floor

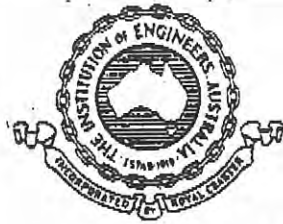
Cnr Pitt and Bathurst Sts

Sydney 2000

HP Pay 1
Syd EH Pay 2

Water Board

300% 4 BOSSES LOGO ON ART!! FAX BROMIDE!!



HISTORIC ENGINEERING MARKER PROSPECT VALVE HOUSES

BOTH VALVE HOUSES WERE COMPLETED IN 1887 AND ARE EXCELLENT EXAMPLES OF COLONIAL ARCHITECTURE. UNDER THE UPSTREAM HOUSE THERE ARE THREE LEVELS OF VALVES FOR DRAWING OFF WATER FROM THE RESERVOIR. THE DOWNSTREAM HOUSE CONTAINS VALVES AND METERS TO CONTROL AND MEASURE WATER SUPPLY TO SYDNEY. THE VALVES, ALL FROM GLENFIELD OF KILMARNOCK, SCOTLAND, WERE INSTALLED C1882 AND THE METERS WERE ADDED IN 1907. THIS ORIGINAL SYSTEM HAS BEEN IN OPERATION FOR MORE THAN 100 YEARS.

DEDICATED BY
THE INSTITUTION OF ENGINEERS, AUSTRALIA
AND THE WATER BOARD 1994

OK
Feb
1994

PLEASE CHECK SPELLING & LAYOUT
ADVISE IF EVERYTHING IS O.K.

300% 4 BOSSES LOGO ON ART!! FAX BROMIDE!!



HISTORIC ENGINEERING MARKER PROSPECT DAM

THIS EARTH AND CLAY-CORE EMBANKMENT, WHEN COMPLETED IN 1888, WAS THE LARGEST IN AUSTRALIA, ALTHOUGH SIMILAR WORKS HAD BEEN BUILT OVERSEAS. IT WAS A MAJOR COMPONENT OF THE UPPER NEPEAN SCHEME DEVISED BY E. O. MORIARTY, ENGINEER-IN-CHIEF IN THE PUBLIC WORKS DEPARTMENT, TO GUARANTEE SYDNEY'S WATER SUPPLY WELL INTO THE 20TH CENTURY. ALTHOUGH THE RESERVOIR IS NO LONGER THE PRINCIPAL DISTRIBUTION POINT, THE ORIGINAL SCHEME CONTINUES TO SUPPLY SYDNEY WITH WATER.

DEDICATED BY
THE INSTITUTION OF ENGINEERS, AUSTRALIA
AND THE WATER BOARD 1994

OK
Feb
1994

24 December 1993

Mr I G Bowie
School of Civil and Mining Engineering
University of Sydney
SYDNEY NSW 2006



BOARD OF ENGINEERING

Dear Ian,

**Nomination of the Sydney Water Supply Complex – Prospect
for Historical Engineering Marker Plaques**

I am pleased to advise that your nomination of Sydney Water Supply Complex – Prospect for Historic Engineering Marker awards has been approved.

The Commemorative Plaque Sub-Committee of the National Committee on Engineering Heritage is drafting revised wording for the HEM plaques. This will be forwarded to you in the near future for your consideration.

Yours faithfully,



R A Breen
Secretary
Commemorative Plaque Sub-Committee

c,c, Chairman, Board of Engineering
Chairman, National Committee on Engineering Heritage
Members, Commemorative Plaque Sub-Committee

2/2/94 Report to E.H. meeting — site visit with Chris Grey & WB staff — general agreement on details.

Chris Grey had meeting with Reece McDougall — memo to General Manager of WB for funds for the event.

Approved

I suggest we pay for all 2 plaques at \$700

Memorandum



**The
Institution
of Engineers,
Australia**

NATIONAL OFFICE

To: Members, Commemorative Plaque Sub-Committee

From: R A Breen, Board of Engineering Executive Officer

Date:

Subject: **ASSESSMENT OF COMMEMORATIVE PLAQUE NOMINATION**

File No: 3/6/86

Gentlemen,

At the NCEH meeting on 18 November, a nomination by Sydney Division of the Sydney Water Supply Complex at Prospect for three Historic Engineering Marker commemorative plaques, was distributed to Commemorative Plaque Sub-Committee members (Bill Oliver took Ray Whitmore's copy).

Please examine the nomination and respond using the enclosed reply facsimile.

Replies are required by **17 December 1993**. Non response by that date will be taken as endorsement of the nomination without reservation.

R A Breen
Executive Officer

c.c. Chairman, National Committee on Engineering Heritage

COPY



WATER BOARD

Environment Management Unit,
15th Floor, 115-123 Bathurst St, SYDNEY NSW 2000
PO Box A53, SYDNEY SOUTH NSW 2000

8 November, 1993

Contact: Colin Heath
Tel: 350.5587

FOR COLLECTION a.m. 8/11/93

Mr. Don Fraser,
C/- Institution of Engineers,
NSW Division.

Dear Don

re: INSTITUTION OF ENGINEERS - PLAQUING OF PROSPECT RESERVOIR

Please find attached a copy of memorandum from Mr. Geoff Henstock, Executive Officer to the Appointed Board to Mr. Colin Heath regarding the abovementioned event.

Mr. Henstock has advised that the Managing Director has given approval for the Institution to recognise the Prospect Reservoir during Heritage Week in April 1994.

I will be Acting as Stormwater Manager, Central Region at our Rockdale office from Monday 8th November until at least 6th December, 1993 therefore could you deal directly with Geoff Henstock on telephone number 350.5148 if you have any queries regarding this event.

Yours sincerely

Colin Heath
Principal Environmental Scientist

att.

For information: Reece McDougall



9394pros.mem

MEMORANDUM

To: COLIN HEATH, EMU

From: EXECUTIVE OFFICER TO BOARD

Subject: **RECOGNITION OF ENGINEERING HERITAGE VALUE
OF PROSPECT RESERVOIR - APRIL, 1994**

As you know, the attached letter of 21st September, 1993 to the Chairman from the Institution of Engineers proposes that a plaque be placed at Prospect Reservoir in recognition of its heritage value. It is proposed that this occur during Heritage Week in April, 1994.

The Managing Director has approved:

- 1) The Board's involvement in the Institution's plans to recognise Prospect Reservoir; and
- 2) Continued negotiations to borrow the Streeton painting of Prospect Reservoir. Negotiations are being pursued by the Regional Manager, Central (Mr Bill Hazell) and the Art Gallery of New South Wales.

It would be appropriate for your area to liaise with the Institution to organise the ceremony. Please advise me if it is decided to involve the Chairman and/or Board Members in the function.

Geoff Henstock
05.11.1993

c.c: Mr Bill Hazell



The Institution of Engineers, Australia

ESTABLISHED 1919 - INCORPORATED 1926
INCORPORATED BY ROYAL CHARTER 1938

SYDNEY DIVISION

ENGINEERING HERITAGE COMMITTEE

EAGLE HOUSE,

118 ALFRED STREET,

MILSONS POINT 2061

TELEPHONE: 929 8544

ALL CORRESPONDENCE
SHOULD BE ADDRESSED
TO:

THE SECRETARY,
BOX 138, POST OFFICE,
MILSONS POINT, 2061

21 September 1993

The Chairman,
The Water Board,
P.O. Box A53,
SYDNEY SOUTH,
NSW 2000.

Dear Sir,

**The awarding of Historic Engineering Markers for the Embankment, the
2 Valve Houses, and the Lower Canal at Prospect**

The Institution has an active national programme of recognizing important Engineering Heritage artefacts and construction.

At the Water Board you have a series of outstanding examples of Australian Engineering.

We were all delighted that you will allow us to place Historic Engineering Markers on your two aqueducts at Annandale, in October.

On behalf of the National Committee on Engineering Heritage of the Institution of Engineers Australia, my Committee now respectfully requests that, on 17th April 1994, during Heritage Week, if convenient, you accept the Dedication of Plaques for the Important Historic Engineering works at Prospect, listed above. The Plaques would come as a gift to you from the Institution.

With kind regards to you and your colleagues,
Yours faithfully,

Paul Hagenbach

Hon. Secretary.

c.c. Colin Heath Esq. R. Breen Esq. J. Dobell Esq.
Prof. D.J. Fraser. A. Moulds Esq. I. Bowie Esq.